

# Transition Next Steps



Issue 15  
Spring Term 2009

**Welcome to the Spring 2009 edition of Next Steps, the newsletter for parents and carers of young people with learning difficulties and/or disability in transition from school to adult life.**

Partnership with Parents provides information, advice and support to Surrey parents and carers of children of all ages with special educational needs. We can help in many ways, from form filling, to providing information about parents' rights and responsibilities. We offer a free, confidential helpline, as well as training and information sessions.

If you have any queries or concerns about your son's or daughter's transition, we can provide information about who the key people are for you to be in contact with, what role each agency or organisation fulfils and what should be in place to ensure that the transition process is as smooth as possible. Please do not hesitate to get in touch – our contact details are below.

This newsletter is sent out at the beginning of each term. We try to include in it items of interest and

details of forthcoming events. If there is any topic you would like covered in a future edition, or an event you would like us to promote, please let me know.

In this issue, there are several items about carers. Their importance and contributions are being recognised – some of these items may be of interest to you.

I have also included an update on the project to introduce person-centred transition reviews into Surrey's special schools, and all other secondary schools.

Finally, thank you to all those who attended our Transition Conference in November, and to the workshop leaders. Feedback from the event was extremely positive.

**Sally Brooks**  
**County Transition Advisor**

## ***Partnership with Parents***



Noke Drive, Redhill, Surrey RH1 4AX

**Helpline: 01737 737300**

**Email: [pwps@surreycc.gov.uk](mailto:pwps@surreycc.gov.uk)**

or visit our **website: [www.pwpsurrey.org](http://www.pwpsurrey.org)**

To contact **Sally Brooks, County Transition Advisor** call 01737 737300 or email [sally.brooks@surreycc.gov.uk](mailto:sally.brooks@surreycc.gov.uk)

# Family carers matters

Learning disability news and views

'Family Carers Matters' is a newsletter produced by Mencap, focussing on the issues and latest news affecting family carers of people with a learning disability.

The newsletter is produced three times a year, and aims not only to empower family carers through information, but also to provide a voice for families to participate, influence and directly affect the work of Mencap.

Family carers sit on the editorial board and work with the family carers team to ensure the newsletter reflects the key matters facing carers today.

The latest issue contains articles about **healthchecks** for people with a learning disability, and also for carers. It is estimated that family carers save the government £150 billion each year in unpaid care. Most carers visit their GP with the person they care for, yet many neglect their own health in order to focus on their caring

responsibilities. In its recent carers' strategy the government promised to provide annual health checks for family carers. They recognise that family carers are not generally in good health and aim to pilot annual health checks in a number of areas. They also pledge to train relevant professionals on the health needs of family carers.

There are also articles about the government announcement that people with a learning disability will be offered an annual health check, and about the importance of the role of fathers, and how important it is not to neglect their needs and issues.

The newsletter can either be downloaded from the Mencap website at [www.mencap.org.uk](http://www.mencap.org.uk) (- families – services & resources – family carers matters) or by contacting them on 0161 968 9250 or by writing to them at Mencap, 21-22 Ford Street, Stockport SK3 0BT



**Surrey Parenting Education and Support** are running a number of courses for parents of children and young people of various ages and needs, both in east and west Surrey, during the Spring term. Most courses last 10 weeks.

Further information can be obtained from their website at [www.surreycc.gov.uk/surreyparenting](http://www.surreycc.gov.uk/surreyparenting) or by telephone on 01306 876223

The TSA is a charity focusing exclusively on work with teenagers and young adults.



It is responsible for research on a variety of related topics. Recent research includes looking at the needs and experiences of parents of young people who have mental health difficulties. Currently, there is a research project entitled 'Supporting the transition to adulthood of young people in the criminal justice system'.

It produces publications for both parents and professionals on a wide range of subjects connected to young people. There are also a number of books for teenagers themselves, covering topics such as growing up, alcohol, drugs, bullying, eating disorders and grief. There is a list of contact details of organisations which can help teenagers.

Further information, including research findings, is available on their website at [www.tsa.uk.com](http://www.tsa.uk.com).  
Tel no: 01273 693311

**face2face**  
Parents supporting Parents of Disabled Children

Face 2 Face is a network of trained volunteer befrienders who can help parents make positive adjustments to the news that their child has a disability. It is a project supported by SCOPE, the national charity.

They have recently launched weekly drop-in coffee mornings during term-time for parents of children with special needs, whatever the age of the child. They take place at the YMCA, Princes Road, Redhill RH1 6JJ from 10am-12noon, on Friday mornings. They are very informal and allow parents to chat, share information and offer support. There are free crèche places for children from 5 months to 5 years.

For further information contact Chris on 07947 254416 or 01737 779979, or email [face2face@ymcaredhill.com](mailto:face2face@ymcaredhill.com)

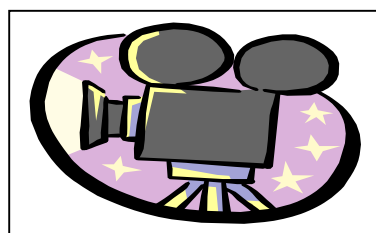


Surrey NAS talks and branch meetings - all meetings start with coffee at 7:45pm; speakers begin at around 8:00pm.

**GUILDFORD** - Tuesday 20 January 2009 at St Saviours' Church, Woodbridge Road, Guildford GU1 4QD - *Stop it now! Recognising the signs of harmful behaviour on the internet* - a speaker from the Lucy Faithfull Foundation

**REDHILL** - Tuesday 10 February 2009 at Holy Trinity Church, Carlton Road, Redhill RH1 2BS - *Managing fears and phobias in ASD children* - Mark Brown, Community nurse for children with learning disabilities

For more information, contact Sara Truman on 01483 822630, or email [nas@mugsy.org](mailto:nas@mugsy.org)



### Kids' cinema outing

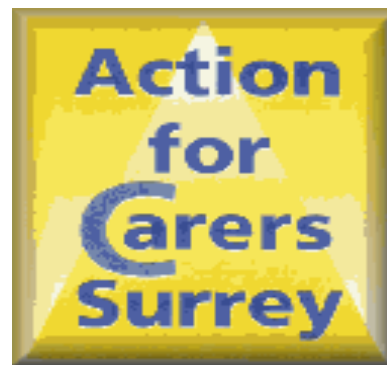
The annual NAS Surrey Branch cinema outing for families will be during half term on Sunday 22 February 2009. For more information, please contact Sara Truman (details opposite).

***Inviting all carers in Surrey:  
'New developments in the planning  
and delivery of social care and  
support for carers - what they  
mean for carers and how carers  
can influence the changes'***

Following an event at Leatherhead on 29 September 2008, 2 further days have been arranged to enable carers to continue the discussion about future changes in social care provision in Surrey arising from the proposed introduction of Self Directed Support and the commitments in the new National Carers Strategy.

These will be held on: 13 January 2009 at Christ Church Woking, and 12 March 2009 at Baptist Church Godalming. These events will run from 10:30am to 3pm and refreshments and lunch will be provided.

Further information can be obtained from Laura Cresser on 0208 541 7743 or by email to:  
socialcare@surreycc.gov.uk



### **New Year and New Opportunities!**

Surrey Adult & Community Learning centres and East Surrey Adult Learning Centres are offering a 50% discount on courses advertised in the new brochure. To qualify, you must be in receipt of Carers' Allowance (proof will be required).

Brochures can be found at libraries, council offices and local adult learning centres and also on the Surrey County Council website.



Us in a Bus, a Surrey based charity working with people with profound and multiple learning disabilities and complex needs, is offering reduced rates for parents who want to attend their Intensive Interaction workshops. Intensive Interaction is a straightforward and effective way of getting in touch with people who might really be struggling with communication. The next "open" workshop is in Redhill on Mon 2<sup>nd</sup> March. To find out more, call Janet Gurney on 01737 764774, or visit [www.usinabus.org.uk](http://www.usinabus.org.uk)



## PERSON-CENTRED TRANSITION REVIEWS PROJECT

After working on this project over the last year, we have finally produced a Resource Guide for schools and professionals. Copies have been sent to all of Surrey's special schools, as well as to many professionals.

The Guide contains lots of resources for them to use - they are in both paper and electronic format, so that they are easy for schools to access and adapt to suit their needs. Although they are mainly intended to be used at the transition review (Year 9), the ideas can be used both higher



up and lower down the schools, as appropriate.

Partnership with Parents has now been given a further grant to expand the work into Surrey's

mainstream secondary schools. This work is now in progress, and all 53 schools are being included in it. Some of the mainstream secondary schools are becoming actively involved in the project, by using the resources for the Year 9 reviews they are preparing for now. The independent and non-maintained schools based in Surrey have been invited to join in too.

**On 30 April 2009, there is to be a half day conference with workshops for representatives of all mainstream secondary schools and non-maintained and independent special schools based in Surrey, on the subject of person-centred reviews.**

If you are interested to find out more, you can either contact the SENCO at your child's school or get in touch with Sally Brooks at Partnership with Parents (see contact details on front page).



SENDist has changed! SENDist **was** the Special Educational Needs and Disability Tribunal. As from November 2008, the appeals process has changed **for appeals lodged after 3 November 2008**, and SENDist has become SEND. More information can be found on their website at **[www.sendist.gov.uk](http://www.sendist.gov.uk)**.

## New website just launched!



WiseMove is a website about supporting people with learning disabilities into work. It has been funded by The

European Social Fund Leonardo da Vinci programme. Partners from the UK, Ireland, Spain, Italy, Belgium, Sweden and Finland have been involved.

Alongside WiseMove, a workmaterials website has been developed

[www.workmaterials.org](http://www.workmaterials.org)

On this website there is:

- a series of factsheets for job coaches on a range of work and learning disability / autism related subjects
- a questionnaire to use to produce an individually tailored pictorial questionnaire about a person's job
- a pictorial questionnaire about health and safety

The factsheets cover rights at work, communication, visual aids, disability awareness, autism, tips for teaching, travel training and preparation for work.

The questionnaires could be used or adapted to cover use by young people going to school, or for other activities. Additional pictures and photos can be 'imported' and used, as well as those provided on the website.

The website has been developed and designed by Mike Leat of Communication People (who designed Options for the Future, the transition guide for parents of young people with a disability, and the Resource Guide for the project on person-centred transition reviews, referred to on page 5).

***HAVE A LOOK AND SEE HOW YOU COULD USE IT!***



**New telephone number for Surrey County Council's Contact Centre**

Surrey County Council has changed the phone number for their Contact Centre - from 1st December 2008 it is **03456 009 009**.

**This is the first point of contact for all council enquiries.**

They can also be contacted by:

Email: [contact.centre@surreycc.gov.uk](mailto:contact.centre@surreycc.gov.uk)

Fax: 020 8541 9004

Minicom: 020 8541 8914.





Young people with a learning disability attending mainstream schools often feel vulnerable and anxious, according to a new report. What About Us? is the result of a joint study between the University of Cambridge and the Foundation for People with Learning Disabilities. The research was

carried out with young people, schools and colleges, and their staff.

It was found that young people wanted to feel safer and more secure between lessons. Recommendations included access to 'safe' areas, increased supervision and more guided activities between lessons.

Although government policy is increasingly geared towards inclusion of students with a learning disability in mainstream school, if not properly implemented, this can lead to problems.

It was agreed that schools and colleges should do more to listen to their students, and they should be asked for their views.

The website contains information about how the research was carried out, and who was involved, as well as their findings and recommendations. There is a section called 'Feeling good about yourself' which gives young people ideas about having fun, looking after themselves and getting help. It is designed with young people in mind.

[www.whataboutus.org.uk](http://www.whataboutus.org.uk)

## INDEPENDENT LIVING RESEARCH

The Independent Living Strategy, launched in March 2008, commits the government to investigate the effectiveness of advocacy support for disabled people at risk of losing choice and control.

To begin this process, Bristol University's Norah Fry Centre has been commissioned to find out how to understand better how independent advocacy works at key life stages, including entry into residential care, transition from youth to adulthood and aspects of anti-social behaviour.

The Office for Disability Issues will publish the conclusions of this research in summer 2009. In the meantime, you can find out more on the ODI's Independent Living website:

[www.officefordisability.gov.uk/working/ilrresearchpublications.asp](http://www.officefordisability.gov.uk/working/ilrresearchpublications.asp)

You can also contact them by writing to the Office for Disability Issues, 6th Floor, The ADELPHI, 1-11 John Adam Street, London, WC2N 6HT or express your views on these issues by telephoning the Equality and Human Rights Commission (EHRC) on 0845 6004 6610.

'Aiming High for Disabled Children' is the Government's transformation programme for services for children with disabilities in England. One of the key areas is to improve access to leisure activities and short breaks for disabled children and their families. An important part of this work is consultation with parents/carers, children and young people to ask about the services they would like, and parent participation in shaping services in Surrey.

Surrey Children's Services and Surrey Primary Care Trust are working together to gather the views of as many parents/carers with children with disabilities as we can, and during the next few weeks will be sending out questionnaires by post and email.

If you do not receive one, and would like to take part, please contact Pam Quilter, Aiming High Programme Manager by email [pam.quilter@surreycc.gov.uk](mailto:pam.quilter@surreycc.gov.uk)

More information about the 'Aiming High' programme can be found on the website [www.edcm.org.uk](http://www.edcm.org.uk).

## WOULD YOU LIKE TO BE INVOLVED?

Would you like to be able to voice your opinions in a place where they would be listened to and heard? Would you like to influence changes?

Would you like to know more about local procedures, policies and services (including health, social care and education) for children and young people, including those with special educational needs and disabilities?

The Surrey Parents and Carers Advisory Board is a forum for collecting and expressing the views of parents and carers of children and young people in Surrey. The group has friendly and informal meetings about 4 times a year, within the school day, at convenient locations across the county.

It is keen to attract additional members, from all parents and carers. Those who have young children with special or additional educational needs will be particularly welcome. If you are interested in knowing more, please contact, Kate Evans 01737737300 [kate.evans@surreycc.gov.uk](mailto:kate.evans@surreycc.gov.uk) or Alison Parker 01737 737152 [AParker@surreycc.gov.uk](mailto:AParker@surreycc.gov.uk).