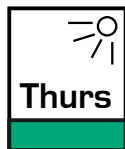


The Learning Disability Partnership Board in Surrey



Thursday 6 May 2010



9.30am Park House Leatherhead

Minutes from our April10 meeting, latest news, and Chairs briefing

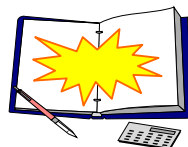
Linda Stonestreet welcomed everyone to the meeting.

Updates

Partnership Board Agenda 2010 - 2011

The updated Partnership Board Agenda needs to put up on the Partnership Board website.

ACTION



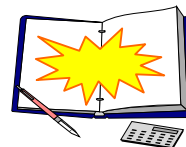
South East Regional Network Meeting

19 Partnership Boards from the South East region went to this meeting. Lead Officers and Co-Chairs went. Mary Hendrick and Linda Stonestreet went from our Partnership Board.

Linda took photos which she said she would bring to our June Partnership board.

People talked about The Partnership Board Self Assessments. We will put our Easy Read version up on our website.

ACTION



There was a vote for the Chair of the Regional Programme Board. Linda got 4 votes but wasn't elected. Dawn from East Kent, and Barbara from Basingstoke were elected.

They will come to Surrey to tell us more about the Regional Programme Board.

South East Regional Health Authority Event

This was an event for us to share what good health work we have been doing in Surrey.

We also learnt about the work of the 7 other Primary Care Trusts in the South East of England.

Earlier this year we rated how well we were doing on Health in Surrey.

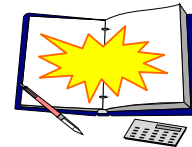
- **Red** meant badly
- **Amber** meant – could do better
- **Green** meant doing well

In Surrey we were Amber for campus closures, though this was because the Delays at the Department of Health have meant that we have not been able to close our Campuses as quickly as we want to.

We will put a copy of our Health assessment on our website



ACTION



Self Directed Support

Mary Hendrick talked to us about Self Directed Support in Surrey



Why we are doing Self Directed Support (SDS):

Holistic assessment and support for carers

People are given the opportunity to assess their own needs. Self Directed Support ensures carers are included from the beginning.



Control over money and it's clear why money is given

People will be given a budget using a standard system and they can choose how to spend their money to best meet their needs.



Transfer of power puts the person at the centre of decisions. The person can decide on their support and what they would like to achieve in life.



More included in society and positive risk taking

People will have more opportunities to do activities they like, education, employment or voluntary work in the community.



How self directed support works.

We have been developing SDS in some areas of Surrey with Older People, People with Physical and Sensory Disabilities and People with Learning Disabilities since May 2008.

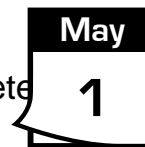
We have developed an SDS leaflet, Frequently Asked Questions and Myth Busters to help tell you more.



We have designed an Easy Read Self Assessment Questionnaire.

As of the beginning of May 2010:

- 340 people with learning disabilities have completed a Supported Self Assessment
- 300 people with learning disabilities have informed of their indicative personal budget
- 84 people with learning disabilities have completed a support plan
- 19 people with learning disabilities have completed an initial review



SDS will roll out across learning disability teams in Surrey during April – June 2010

- The new assessment has a Carers section, which can also be used on its own.
- We ask Carers about what they do, how they feel and if they are able to continue with the support they give.
- We also ask them about their own needs and if they need any additional support.
- Carers can develop their own support plan and have a personal budget themselves



Support Brokers

Support brokers are people whose job it is to help people get the services and assistance they need through self directed support.

They work alongside the person to help them understand the different types of services and support that are available and help the person to choose and organise the assistance that will suit them.



They can help negotiate services and costs, purchase and organise the support required and sort out the easiest way to pay for services and support.

Partnership board members Questions and Comments

We need to set up a Self Directed Support section on the Partnership Board website.

ACTION



Michelle said they she now has her own budget

Gaynor said that her daughter now has her own budget

More people are having carers assessments as a result of the new process that has the cares section included. Caroline explained that it is important that carers have privacy when doing their part of the assessment as they may want to talk without the person they care for listening.

Some older carers may feel guilty if they say that they can't care – the carers assessment needs to work out if they need extra support.

Mary explained that there is new guidance about how we support older carers – we need to meet with John Bangs from Surrey County Council.

It's important to understand that if people don't want Surrey County Council to keep hold of their money an independent trust can be set up. This is a good option for people with more complex needs.

Not all Care Managers have been trained on SDS yet. Nicky Palmer asked that Community Learning Disability Team staff are included in the training



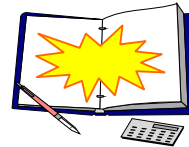
Brokers in Surrey

Brokers are independent. At the moment Just Advocacy, Advocacy partners and the Surrey independent Living Council are brokers. They are funded by Surrey County Council so do not charge the service user.

In other parts of the UK brokers do charge service users directly for their work

ACTION

We need more information about brokerage. Perhaps this could be an agenda for the partnership board in future.



People get confused between a broker and a care manager – we need to make this clear.

We need to have a quality standard for brokers. In the future Broker services may go out to tender and Surrey county Council would have preferred providers.



My Life, My Budget is a fun and interactive board game for people with learning difficulties and other disabilities who want to know more about Personal or Individual Budgets.

We have several copies of the game in Surrey and it is being tried out at Bentley Resource Centre and by Just Advocacy

For more information Contact:

John Woods, Head of Transformation for Adults Social Care
john.woods@surreycc.gov.uk, 07968 832804

Transformation Manager (SDS) – Gail McCulloch
gail.mcculloch@surreycc.gov.uk, 07968 833607

The Travel Project



Phil Mack came to talk to us about the Surrey Travel Project

The Partnership Board gave us a grant of £41,000 to:-

- Create a network of people to help more people to travel independently in their area
- Find a standard way to help people learn to use public transport or walk safely in their local area



In June 2009, we held a meeting of people from Surrey County Council and other organisations who are involved in travel. Those who came were keen to help more people to travel.



The Surrey Travel Network is helping us design materials and give feedback on what we are doing. We hope they will use our standard approach to help more people travel.

We have designed easy-read forms around travelling

Feedback forms on people's journeys for transport companies

Bus review comment forms

Guide Dogs 'Talking Buses' campaign

New travel forms

Leigh Chambers has been working on travel training forms.

Travel Gadgets

We have been looking at easy-use tracking phones to support people who are travel training.

We hope it will reduce some of the fears that people with learning disabilities and their carers have about getting lost when out and about.

We have already done a tracker phone trial with day service community groups and Employability.



Travel Buddy project

We will shortly be piloting the idea of people with learning disabilities being paid to help other people to travel – ‘buddying’ them on their journey.



Travel Surrey Website

It will have lots of useful information like:-

- people’s own travel stories
- travel planners
- travel training process
- assessment forms
- and lots more



It will have large picture buttons which will take you to different areas of the website. There will also be a section containing a series of filmed scenarios, with three possible outcomes to choose from. These can be talked over as part of the travel training.





Crossing the Road



Next Steps

Website going live and growing

Showing people the standard travel training method

Building the Travel Network

Expanding the Travel Buddy project

Doing more Bradford Travel Training courses



Things for the Partnership Board to think about:

Look at the draft website and let us know what you think by 14th May – it's at <http://surreytravel.polishdigital.xon.pl>

Tell us if you know of a Surrey organisation who might work with us to fund and run another Bradford Travel Training Course

Think about the Partnership Board taking over and building the Travel Network

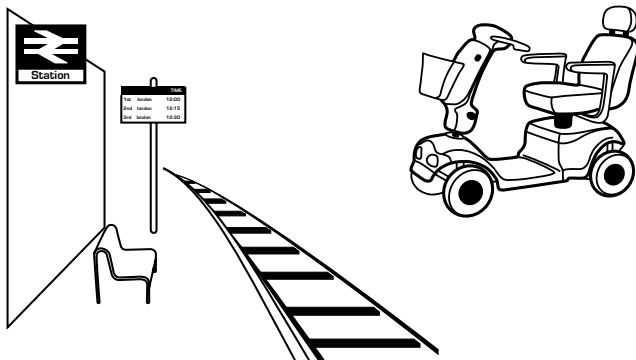
Consider funding a loan stock of travel gadgets to support people to travel more independently

Questions and Comments from Partnership Board Members

Cath from RAD suggested that the videos could have signing added.

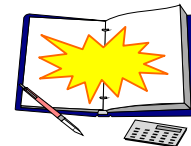
Training for bus drivers is important

Mike said he was happy for his imagebank, EasyPics, to link with the Surrey travel website



There are problems with accessibility at Train Stations. Mary said she would draft a letter about this

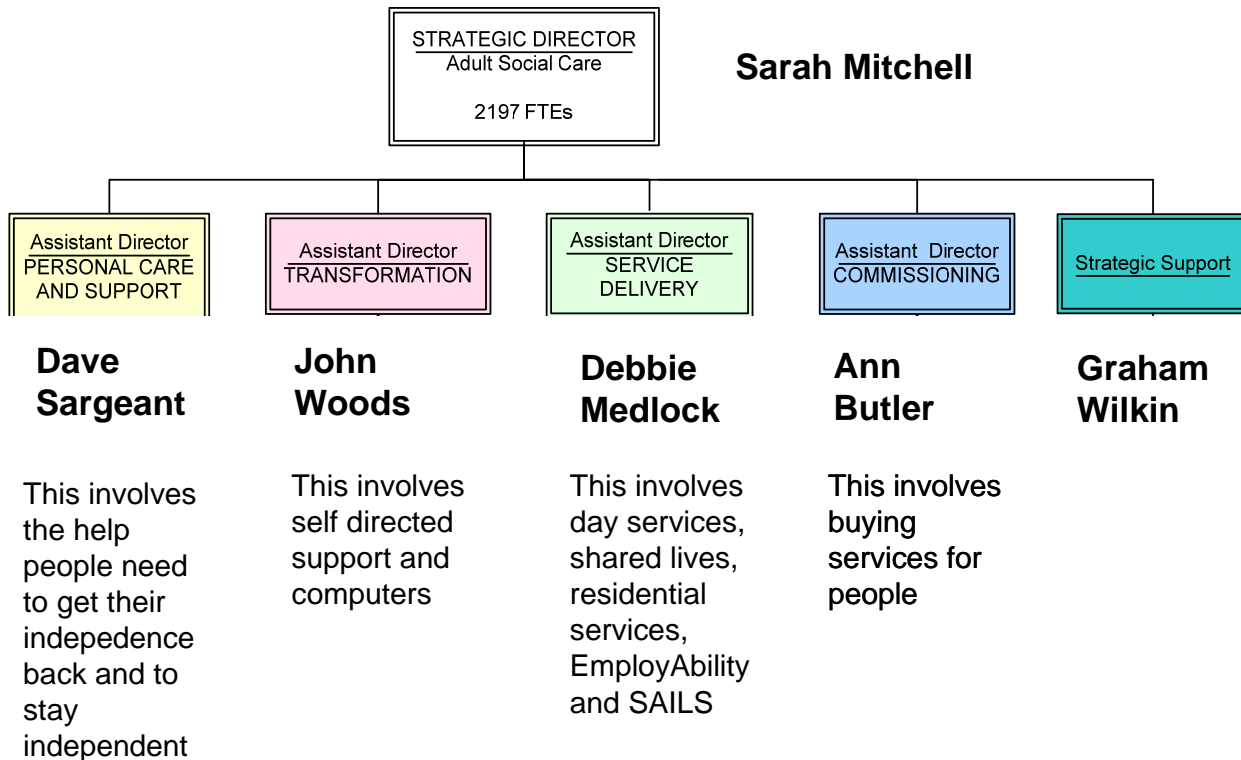
ACTION



Perhaps the Travel website could have information about which stations are accessible in Surrey

Mary Hendrick talked to us about the new Adult Social Care structure.

Surrey County Council is changing how it organises it's Social Care Services



Yvonne Waltham will be the Personal Care and Support representative for the Partnership Board. Yvonne's role as Senior manager covers all care groups.

It is likely that Surrey County Council's Learning Disability teams will become part of long term support teams for all client groups but will keep their specialism.

Some members were worried about the learning disability specialism being lost.

David Claridge asked if the overall budget was reducing and will there be fewer Care Managers? Also David felt we needed a briefing about what difference these changes could mean in practice.

This needs to be added to the Partnership Board agenda, along with an update on the Surrey PCT structure

ACTION



Our members

Members who came to our May 2010 meeting are typed in black.

Members highlighted in blue sent their apologies

Co - Chairs

- Linda Stonestreet – service user
- Cllr Michael Gosling – Surrey County Council Elected Member

Local Valuing People Group Chairs

- Cath White - RAD – South East Surrey
- Nicky Palmer - Surrey & Borders Partnership NHS Foundation Trust – South West Surrey
- John Wilson and Julie Wadham – Surrey County Council - North West Surrey
- Sally Dubery – CVS – North East Surrey

Service User Representatives

- Leon Pears
- Keith Spicer
- Micehelle Chinery
- Tori Longley
- George Felwick
- Jo Smyth
- Barry Roberts
- Alison Warren
- Debbie Taylor
- Tracy Anderson
- Pat Lynch
- James Chiltern

Family Carer Representatives

- Marion Price
- Gaynor Gibbons
- Caroline Farnes
- Sara Truman

Voluntary Organisation Representatives

- Tatu Delaney and Claire Jones - Mencap
- Alison White – Surrey Coalition of Disabled People
- Tom Neville & Darren Power – Just Advocacy
- David Claridge / Alan Wilmot – Surrey Care Association

Statutory Organisation Representatives

- Dave Sargeant – Assistant Director for Personal Care and Support
- Mary Hendrick – Partnership Manager, Surrey County Council
- Andy Erskine – Surrey & Borders Partnership NHS Foundation Trust
- Ginny Willis - Surrey Careers Service
- Phil Boulter – SABP NHS Foundation Trust
- Jo-Anne Alner – Public Health, Surrey PCT
- Dr Attard - Consultant Psychiatrist, Surrey & Borders Partnership Foundation NHS Trust
- Antony McCallum and Sue Hart - Surrey Primary Care Trust
- Kieth Sparks - Service Manager North Surrey, Adult & Community Care Services
- Yvonne Waltham – Acting Head of Service, Adult & Community Care Services
- Nicholas Grealy - Service Manager South West Surrey, Adult & Community Care Services
- Jan Chapman – Safeguarding Adults

Supporters

Jane Kolka - RNIB
Carolyn Hill - RNIB

Susie Knox - SCC
Mike Leat – CCP Ltd

Jools Tanner - Welmede

Invited Speakers / Observers

Phil Mack – About Us