

Making a difference



Surrey County Council's Equality Scheme

July 2010 Liz Daughters

Our Equality Scheme

www.surreycc.gov.uk

Purpose is to

- Make our services better and fairer for people who use them
- Help us make sure that we treat disabled people who work for us fairly



Our Equality Scheme

www.surreycc.gov.uk

- Is about people who sometimes find it harder to use our services – like people with disabilities
- The law says an equality scheme must include people with disabilities



Our Equality Scheme

www.surreycc.gov.uk



- We talk to lots of people to find out what is important to them when they use our services
- Then we make a plan to make things better

Our Equality Scheme

www.surreycc.gov.uk



- We must say how we will include disabled people when we make decisions about them
- We must say how we will treat all disabled people fairly

Disability



- Our Equality Scheme includes people with different disabilities and their carers

- Many people have more than one disability
- Many people who are on Surrey Adult Linked Disability Register have more than one disability
- Surrey Association for Visually Impaired tell us they know of 6,000 people with sight impairments

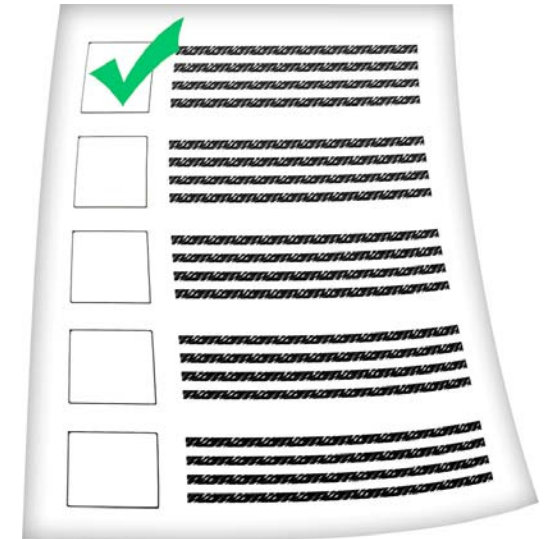




- It is important that we talk to disabled people before we make decisions
- We have talked to lots of people already with different disabilities and asked them about the things that are important to them

They said:

- We should be doing better
- Disabled people should always be included and asked what they think
- There should be enough time planned to include disabled people
- Disabled people's time is valuable and they must be treated with respect



- Information is very important
- Information should be accessible if it is needed
- People don't always know how to ask for information in different formats like easy read
- We should work with community organisations so they can help us



- Treating disabled customers with respect and dignity is important
- Staff should be given training to understand about different disabilities
- Staff should understand about the different things that stop disabled people taking part in everyday life



- Buildings should be accessible and have things like hearing loops



- Disabled people need more information and choice to be involved in social and leisure activities



- Transport is a big problem



Some disabled people can only enjoy things during the day and not at weekends or in the evenings

How can we support disabled people who use Council services ?

- Include disabled people when we are checking if our services are accessible to disabled people
- Plan every year how we will involve disabled people in our equality impact assessments



How can we support disabled people who use Council services ?

- Make sure that disabled people know how to get information about services, transport and leisure activities
- Make our information more accessible including our website
- Make sure that council officers use our guide to holding accessible events



How can we support disabled people who use Council services ?

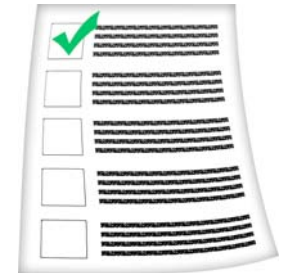
www.surreycc.gov.uk

Making Surrey a better place

- Promote the Social Model of disability



- Continue to involve disabled people with access audits and make improvements to our buildings.



- Work with disabled people and our partners to understand the needs of disabled people and make services better



Working for Surrey County Council

- Things are getting better – we have more disabled people working for us
- We employ people with learning disabilities
- There still needs to be more jobs available
- We can be better at supporting people with different disabilities and making our buildings accessible



Equality impact assessments

www.surreycc.gov.uk

- These are a way of finding out whether the things that we do affect different groups of people in different ways
- The people who work for us and the people who use our services
- When we make changes to services we think about the different people who might be affected to make sure we are being fair to them



Our Equality Scheme

www.surreycc.gov.uk

- We have to say how we will make sure the changes don't discriminate
- There will be an action plan to make sure we do what we say
- People can ask to see them and we put them on our website for people to see
- Sometimes we will ask people to help us if we don't know what the change will mean to them



Have your say and help us with the Disability Equality?

www.surreycc.gov.uk

- What can you tell us to make our disability equality scheme better?



Have your say and help us with the Disability Equality

www.surreycc.gov.uk



Making Surrey a better place

- What is important to people with learning disabilities that we need to include?



Contact details

www.surreycc.gov.uk

Making Surrey a better place

Consultation on Equality Scheme is taking place until 30th September 2010

Have your say



Contact Liz Daughters or Pari Dhillon

Email: equalityanddiversity@surreycc.gov.uk

Phone: 03456 009 009

Website: www.surreycc.gov.uk/equality

